

DO WELL, DO GOOD

THE FORGE
CHARITABLE ADVENTURES

HERITAGE QUARRIES

RECREATION AREA



DOING WELL BY DOING GOOD

DEEP IMPACT

The Forge Charitable Adventures exists to help improve the health of our communities by restoring and preserving natural areas and open space, promoting active stewardship of our environment, and developing and providing access to outdoor education and recreation opportunities to people of all ages, abilities, and socio-economic circumstances in the communities we serve.

Established in 2019 by Chris Gladwin, Jeremie Bacon, and Bart Loethen, The Forge Charitable Adventures (TFCA) is a unique environmentally focused non-profit serving a dual mission: to protect, restore, and re-

invigorate natural ecosystems that have been degraded by overuse and under investment, while partnering with local communities to develop outdoor recreation resources that can be enjoyed and maintained in cooperation with their members.

As a long-term focused, conservation-minded organization, we seek to produce and promote impactful programs that will help TFCA achieve:

- Significant impact by engaging our local communities in conservation and personal health & wellness efforts
- A respected presence as a devoted caretaker in those communities
- Long-lasting partnerships with the communities and individuals we serve
- Enlightened communities where conservation, restoration, and wellness are cherished as core values



TRAIL BUILDING, repair, and ongoing maintenance are core elements of TFCA programming.

Some of the funds raised by the foundation go to support the efforts of volunteer and professional work crews.

Our vision is a future where people of all ages, abilities, and economic circumstances can freely experience authentic outdoor experiences while learning to respect the diversity of life and developing an appreciation for the conservation of scarce resources and fragile ecosystems required to support and enjoy it.

We accomplish our mission by identifying projects and raising funds from private and public sources to execute them. We consider ourselves successful when we are able to:

- Create, restore, and protect natural areas to jointly serve as wildlife habitats and places where people can enjoy nature forever
- Establish and nurture public and private partnerships that accelerate the pace of land preservation for the enrichment of all
- Deliver social benefits in the form of clean and healthy forests, streams, wetlands and lakes
- Provide people with opportunities to understand and embrace conservation issues, and act to preserve the environment

OUR VALUES

The Outdoors Matter

We believe the outdoors is an integral part of the human experience that enriches and enlivens us. Our commitment to protecting the natural landscape is uncompromising, and we are committed to enhancing, preserving, and sharing naturally beautiful outdoor experiences with our neighbors for generations to come.

Well-being is a Lifestyle

Well-being is not just a jog around the block or a cup of green tea in the morning. Well-being is a mental and physical journey that fluctuates and changes day-to-day. At Lemont Quarries Adventure Park, we are dedicated to crafting spaces that enable this life-long mental and physical journey.

Conservation Goes Beyond the Land

We are dedicated to preserving history and restoring the natural landscape of the locations we choose to support for generations to come. This promise fuels our operating strategy and is foundational to our mission.



OPPOR TUNITY

TFCA has identified unique opportunities to provide significant support to the Village and Township of Lemont by sponsoring a number of initiatives in the Heritage Quarries Recreation Area.

We have identified five pillar projects for the historically significant area which, with sufficient funding, could be completed within a 24-month time frame.

Potential projects include:

- Children's Educational Programming
- Invasive species remediation
- Trail restoration and development (bike & pedestrian)
- Public road improvements
- New pedestrian footbridges
- Improved public parking facilities

HERITAGE QUARRIES

ABOUT THE HERITAGE QUARRIES RECREATION AREA

Lemont owes its existence to the Illinois and Michigan Canal (I&M). Digging of the canal began in 1836, the year the village was founded, and finished in 1848, and represented a revolution in the transportation of goods and people and set Chicago on its path to become a great American city.

Located just half a mile east of downtown Lemont, the Heritage Quarries Recreation Area (HQRA) covers approximately 190 acres of quarries and wetlands. The quarries played a significant role in the history of Chicago due to the fact that the dolomite limestone they are famous for was used to build some of the most iconic structures in the city, including Water Tower. The area now includes seven spring-fed quarry lakes connected by a network of mixed-use biking and walking/running trails that stretch roughly 5 miles in total. Today, residents and visitors can enjoy a day at the Heritage Quarries Recreation Area (HQRA) where they can fish, walk, run, bike or paddle along the I&M canal and historic quarries.

Nature is at its best in the quarries which attracts a host of animals from deer, raccoons, and coyotes, to grebes, coots, herons, swallows and ducks. Even osprey have been spotted in the area. Aside from the rich animal life, the region also contains wet to mesic dolomite prairie, marsh, sedge meadow, springs, fens and floodplain forest on shallow soil over limestone bedrock. Tufted hair grass, blue-joint grass and prairie cordgrass are dominant species. Sadly, the area is also host to a large number of invasive plant species which have are steadily choking out most of the native plant, grass, and tree species that belong in the area.

From 2014 through 2018, through the CITGO Caring for Our Coast initiative, CITGO Lemont Refinery dedicated their efforts to various HQRA restoration projects to restore plant and animal diversity to the quarry area. Through this grant and in working with The Conservation Foundation (Naperville, IL), Lemont High School, the Village of Lemont, founders of The Forge Charitable Ventures and hundreds of community volunteers, approximately twenty acres was partially restored through the removal of invasive species and planting of species of seeds, plugs and trees. This, along with the ongoing maintenance of the cleared areas by volunteers, has helped to improve the ecological conservation of the Heritage Quarries Recreation Area.

Despite these efforts however, the progress that has been made to date is insufficient to the needs of the area. Due to budget constraints and underfunding at the local government level, the access roadways, pedestrian bridges, parking facilities, and trail development and restoration projects at the HQRA are woefully behind. There are also hundreds more acres of land to clear of invasive plant species and restore.

With the right supporters, TFCA sees an unique opportunity to lead the redevelopment of public infrastructure, restoration of hundreds of acres of abused public acreage, and build out five to seven additional miles of publicly accessible mountain biking and walking/running trails at the location. Based on the work TFCA has done with the Village of Lemont, consultants, and other partners, we believe we can complete five critical projects within 24 months at a total cost of these projects will be approximately \$4,250,000.

Based on these estimates, TFCA is seeking philanthropic partners to help cover the cost of these key projects. Even without the help of sponsors, TFCA intends to provide funding for enhancements in partial increments annually over the next seven to ten years. Together we can make a meaningful impact on the environment while concurrently improving hundreds of acres of public land and opening the HQRA to new opportunities for people of all ages and abilities to pursue wellness while enjoying authentic outdoor recreation activities.



OPPORTUNITY: CHILDREN'S EDUCATIONAL PROGRAMMING

TCFA has a unique opportunity to turn the HQRA into an immersive and engaging classroom for the pursuit of environmental education for children and adults alike. When we reflect on environmental education programs that consistently and measurably achieve meaningful outcomes for kids, three key characteristics emerge:

- 1) These programs have sufficient intensity to reach their aims, engaging young people in program content over many hours, months, and years.
- 2) They are connected to classroom instruction, reinforcing and expanding on what students are learning in school — particularly in science classes.
- 3) These programs are grounded in positive youth development principles and practices, for example, nurturing development of life skills, a service ethic, and helpful relationships with adults.

TFCA seeks to develop and fund access to environmental education programming which will align with these three characteristics for success. Beginning with educational programming which is designed around the framework of the Illinois Learning Standards, TFCA will create a series of interesting and engaging experiences to tie classroom learning to the outdoors. Additionally, the content TFCA aims to create will include opportunities for multi-year participation for students where the depth and intensity of the content builds over time.

The funding challenges of many of the region's school districts, coupled with the disposable income restraints of many families whose children live in those districts mean that many students will never have the chance to participate in outdoor environmental education programs of any kind. TFCA intends to subsidize its educational programming for those students.

We estimate the total cost of this programming will be \$250,000 over a five-year period; approximately \$100,000 to develop the content and \$150,000 to subsidize student participation.

HERITAGE QUARRIES



OPPORTUNITY: INVASIVE SPECIES REMOVAL AND RESTORATION

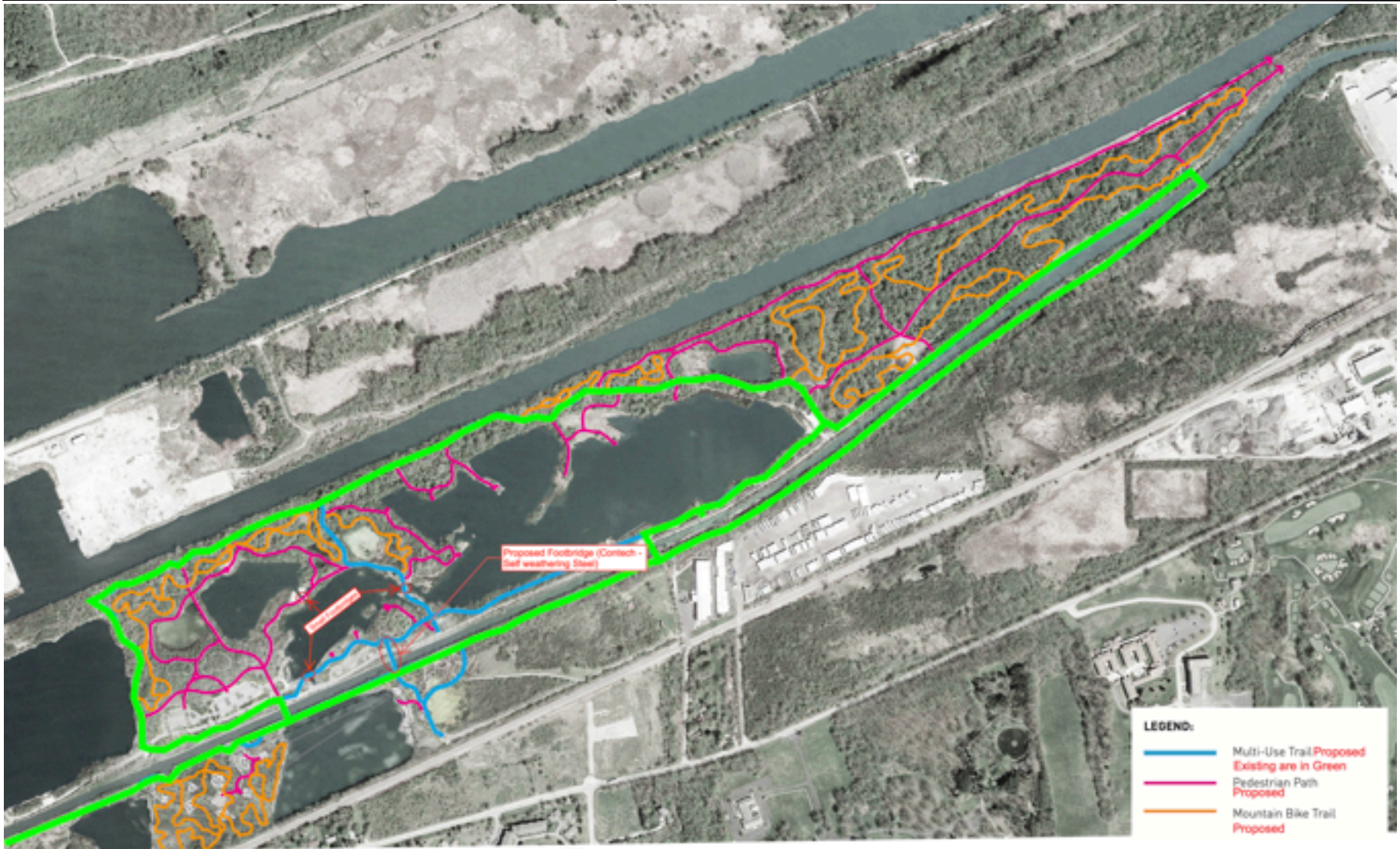
The vast majority of the nearly 200-acres that comprise the HQRA are overrun by invasive plant and tree species including Tree of Heaven, Honeysuckle, Buckthorn and many more. From 2014 through 2018, Citgo, in partnership with The Conservation Foundation, Lemont High School, the Village of Lemont, and activist citizens from the community conducted bi-annual restoration projects in the quarries. Unfortunately, Citgo pulled back from their support of the quarries restoration project in 2019.

TFCA, with the help of The Nature Conservancy and other organizations, have devised preliminary plans to cut and clear invasive plants in order to restore the local ecosystem to its more natural state. In addition to removing tens of thousands of troubling tree and plant species, the complete project would include capital for the re-introduction of multiple native species to gradually reclaim the land.

After the last glacier receded into Canada, Illinois prairie supported Native Americans, who burned the grasslands as they hunted buffalo on foot. European pioneers pushed through the dark forests, amazed to find 22,000,000 acres of sunny, flower-filled grassy landscape. Following this discovery, they called Illinois the "Prairie State." Although only 1/10 of 1 percent remains of Illinois' beautiful original prairie, and most sites are mere remnants. Given the topography of the HQRA, it is an ideal location to re-introduce multiple species of grasses and trees that are native to Illinois' grasslands and wetlands.

We estimate the total cost of these activities to be around \$700,000 for clearing + maintenance and \$300,000 for the re-introduction of native species over a 24-month period.

HERITAGE QUARRIES



OPPORTUNITY: TRAIL RESTORATION & DEVELOPMENT

One of the most exciting things TCFA would like to do in the HQRA is to build an expansive set of walking/ running and biking trails throughout the park. Working with IMBA, TCFA has developed an extensive plan to add several additional miles of additional trails and obstacles 3e, which will include rest areas and scenic views over quarry lakes.

The total estimated expense associated with the development of this trail system is \$587,500, as highlighted in the table included herein. See the appended site development plan for a complete overview of the proposed trail system which includes extensions and new trail systems.

Project	Cost
Multi-use Paths	\$90,000
Mulch-bed Paths	\$95,000
MTB Trails	\$235,000
Ancillary Footbridges	\$107,500
Contingency (10%)	\$60,000
TOTAL COST	\$587,500

HERITAGE QUARRIES

OPPORTUNITY: PUBLIC ROAD ENHANCEMENTS

TFCA, working with the Village of Lemont and outside estimators has completed a preliminary estimate and project plan to make significant improvements to the public access roads feeding the HQRA.

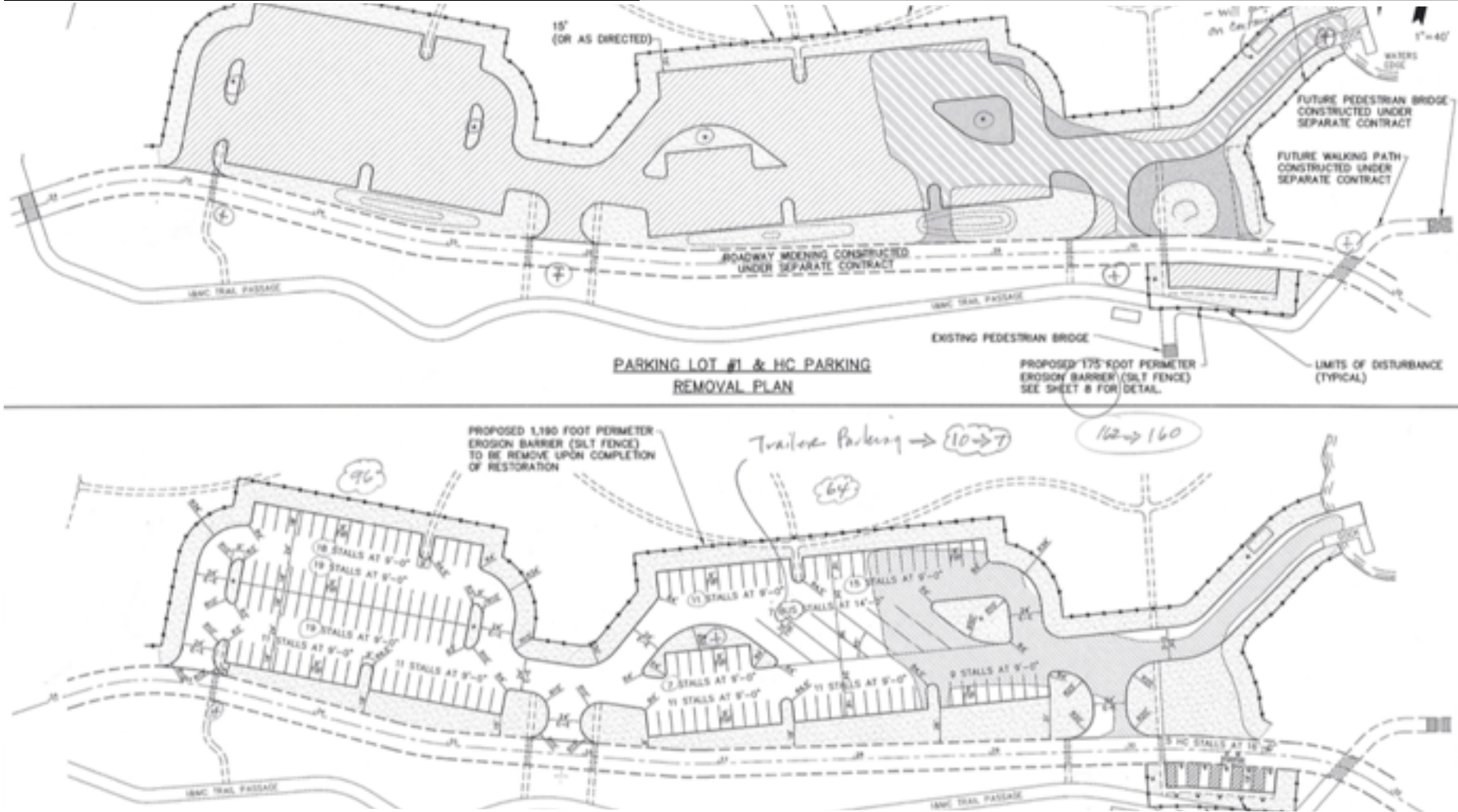
As indicated in the visualization above, the project calls for the redevelopment of a 6,670 foot-long roadway which currently provides access to public parking lots and recreation points within the HQRA. The roadway is used regularly by residents and guests of the area but has fallen into disrepair over time and needs significant work to restore, widen, and ultimately preserve it.

The projected cost for the project is \$700,000, broken our as indicated in the table included herein.

Project	Cost
Roadway	325,000
Guardrail	15,000
Spoil Removal	35,000
Aggregate	50,000
Excavation	65,000
Tree Removal	25,000
Plans	75,000
Construction	45,000
Contingency (10%)	65,000
TOTAL COST	700,000



HERITAGE QUARRIES



OPPORTUNITY: IMPROVED PUBLIC PARKING INFRASTRUCTURE

The HQRA plays host to tens of thousands of visitors a year but suffers from a lack of parking facilities to support the traffic. What’s more, with the opening of The Forge: Lemont Quarries Adventure Park in the summer of 2020, the parking shortage will only be exacerbated in the passive zones within the HQRA.

Accordingly, TFCA, The Forge Adventure Parks, and the Village of Lemont have collaborated on the design of several new parking areas to be developed within the HQRA. With these planned improvements, the area will see a 350%+ increase in eco-friendly parking spaces to support the growing demand for access to its outdoor amenities. As shown in the diagram on the following page, TFCA, in conjunction with the Village of Lemont has finalized plans to clear invasive species to make room for a 240-car lot which replace the ~20-car lot that serves as the primary lot for fishing, biking, and running traffic today.

A second lot at the far west end of the HQRA, which currently supports around 35 cars, will also be improved and extended, nearly doubling its capacity to ~60 spaces. Lastly, the Village plan calls for the creation of another smaller lot that will support another 30 or more cars. In total, the improved parking facility plan would enable the HQRA to support between 325 and 340 cars, ensuring all members of the community who want to enjoy the outdoor recreation opportunities available in the area are able to do so.

Project	Cost
Gravel Parking Lots	\$500,000
Site Prep & Clearing	\$500,000
Electrical (Lighting)	\$150,000
Landscaping	\$200,000
Contingency (10%)	\$150,000
TOTAL COST	\$1,500,000

The total project cost for the new parking lots will amount to roughly \$1,500,000, as highlighted in the table below. This is the largest, and most critical project in the entire HQRA due to the fact that the area will not be

HERITAGE QUARRIES



able to support the traffic TFCA expects will be drawn to the area as a result of the opening of the adventure park and the new trail systems planned for the park.

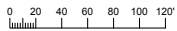
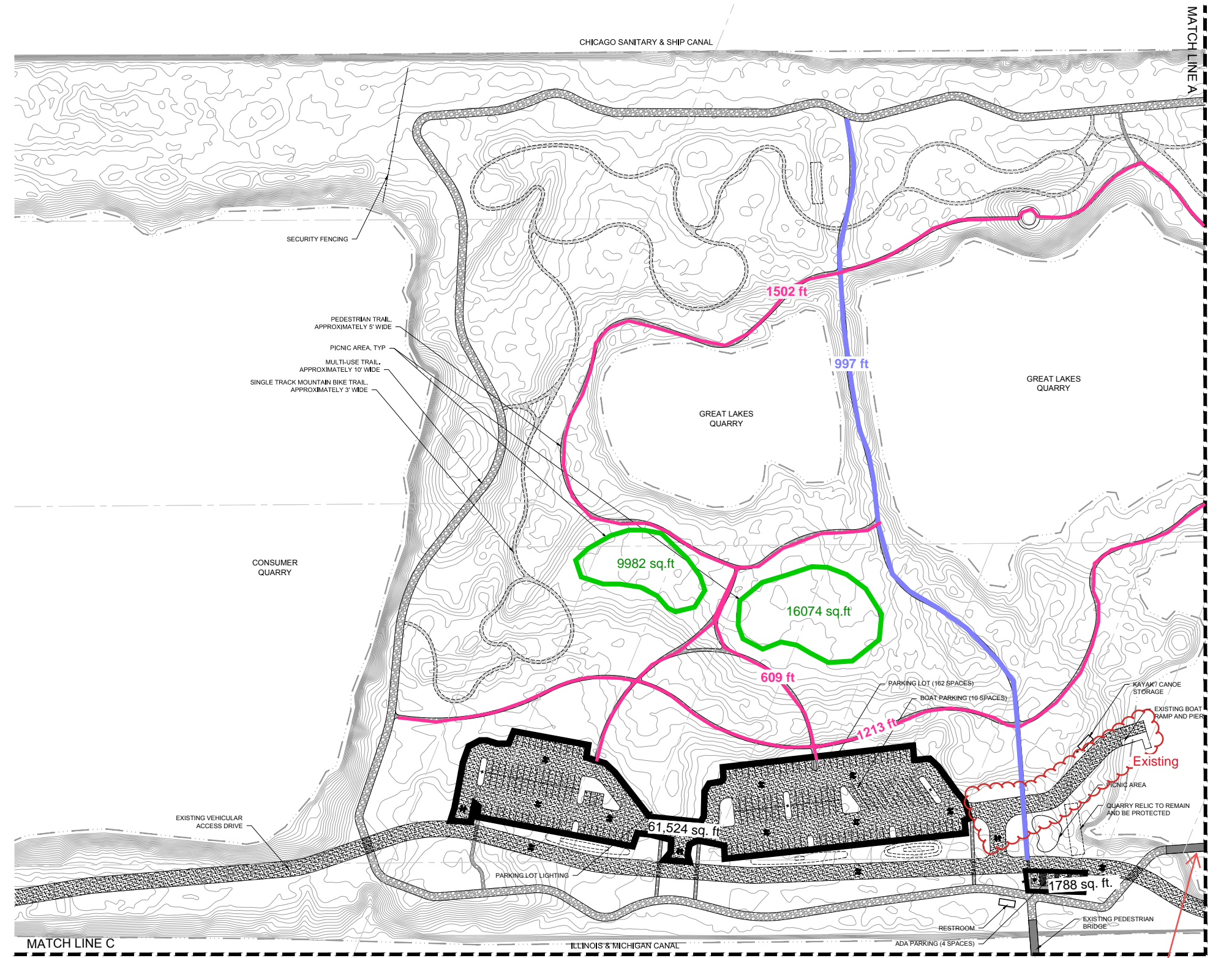
OPPORTUNITY: NEW PEDESTRIAN FOOTBRIDGE

There are currently three mixed-use bridges in place at the HQRA. The primary purpose of the bridges is to facilitate easy access to the areas on the north and south sides of the I&M canal, which runs through the HQRA property. It is believed by all involved that a fourth mixed-use bridge would bring added benefits to park-goers by offering them more ways to get across the canal and open up more possibilities to extend future cycling and running trail routes through the area.

TFCA, in conjunction with the Village of Lemont, has completed an analysis of the costs associated with putting in a new bridge and estimate the expense to be roughly \$200,000.

Project	Cost
Bridge Structure	65,000
Footings	100,000
Plans	15,000
Contingency (10%)	20,000
TOTAL COST	200,000

EXHIBIT E: SITE PLAN



1 SITE ENLARGEMENT PLAN
1" = 60'-0"

LEGEND

- LTAP PROPERTY LINE
- - - PARCEL LINE
- [Pattern] GRAVEL PAVEMENT 63,312 sq. ft
- [Pattern] MULTI-USE TRAIL, LIMESTONE SCREENINGS 997 In ft
- [Pattern] PEDESTRIAN PATH, MULCH TRAIL 3324 In ft
- [Pattern] SINGLE TRACK MOUNTAIN BIKE TRAIL, CLAY BASED BIKE TRAIL MIX
- [Pattern] CONCRETE PAVING
- [Pattern] QUARRY RELIC
- [Pattern] RESTROOM
- [Pattern] PEDESTRIAN BRIDGE
- [Pattern] SECURITY FENCING
- [Symbol] LIGHT FIXTURE
- [Symbol] EXISTING UTILITY POLE WITH PROPOSED LIGHT FIXTURE

ISSUANCES

Rev. #	Description	Date Issued
FINAL PUD		03/27/2019

Project No. : 8189	Drawn : CR	File : 8189_site.dwg
Checked : RR	Scale : AS NOTED	
Approved : XX		
Sheet Title:	SITE ENLARGEMENT PLAN	

Drawing Number:

The Forge
Lemont Quarries

1001 Main Street
Lemont, IL 60439



site design group, ltd.
888 South Michigan Avenue #1000, Chicago, IL 60605
P: 312.437.7300 W: www.sdg-design.com



Landscape Architect

L-101

EXHIBIT E: SITE PLAN

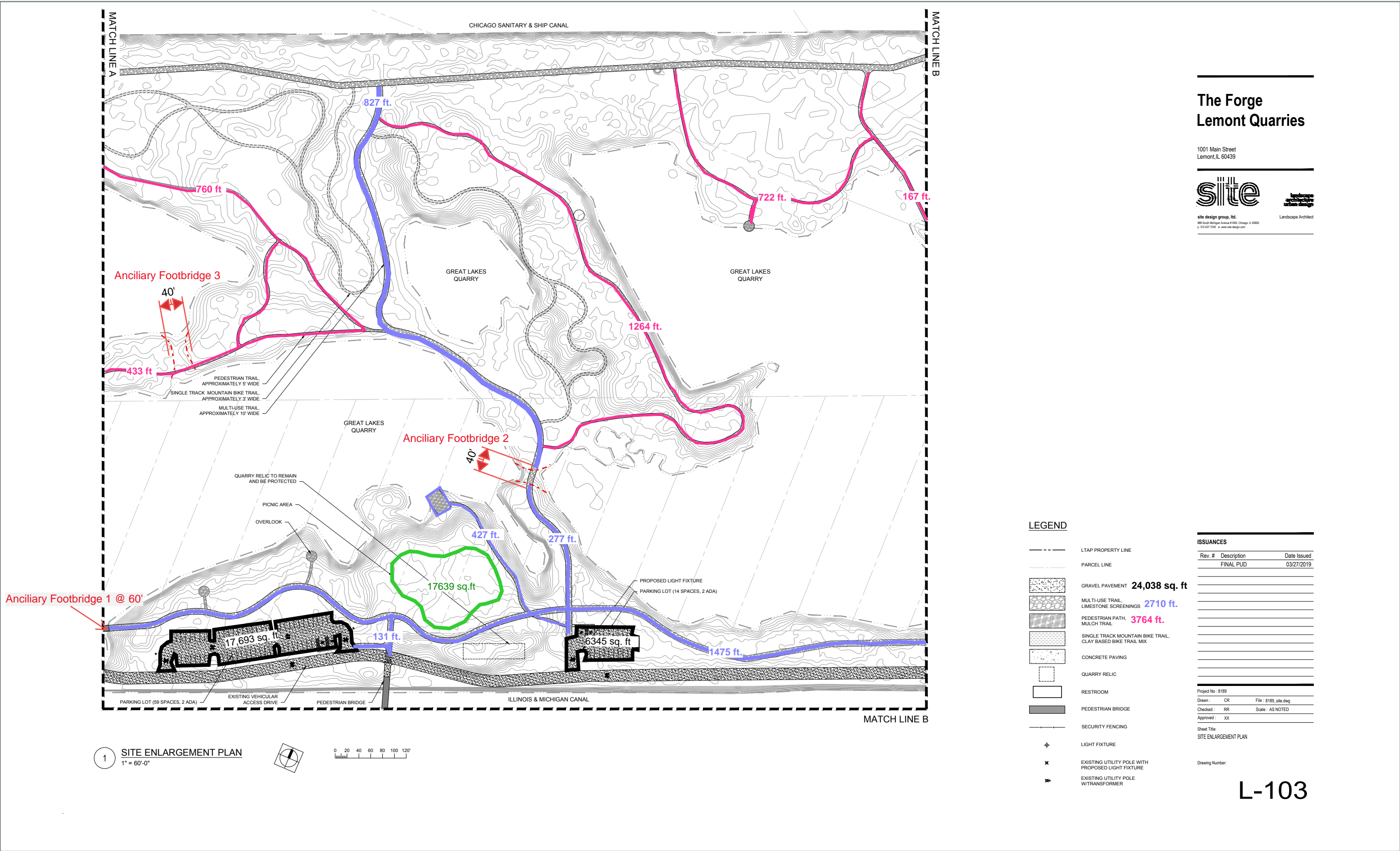
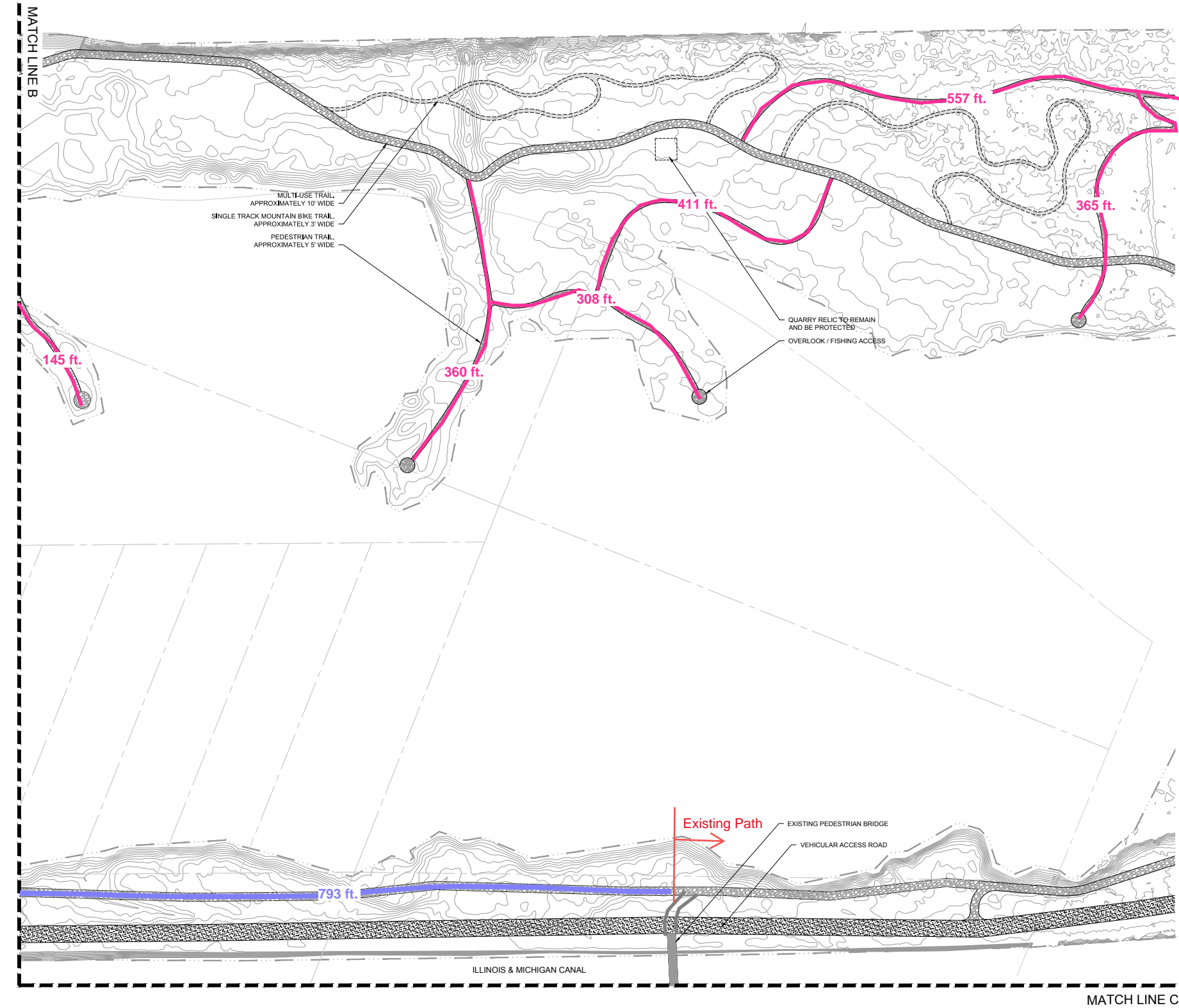


EXHIBIT E: SITE PLAN



1 SITE ENLARGEMENT PLAN
1" = 60'-0"

LEGEND

- LTAP PROPERTY LINE
- PARCEL LINE
- GRAVEL PAVEMENT
- MULTI-USE TRAIL, LIMESTONE SCREENINGS 793 ft.
- PEDESTRIAN PATH, MULCH TRAIL 2146 ft.
- SINGLE TRACK MOUNTAIN BIKE TRAIL, CLAY BASED BIKE TRAIL MIX
- CONCRETE PAVING
- QUARRY RELIC
- RESTROOM
- PEDESTRIAN BRIDGE
- SECURITY FENCING
- LIGHT FIXTURE
- EXISTING UTILITY POLE WITH PROPOSED LIGHT FIXTURE
- EXISTING UTILITY POLE W/TRANSFORMER

The Forge
Lemont Quarries

1001 Main Street
Lemont, IL 60439



site design group, llc
888 South Michigan Avenue #1000, Chicago, IL 60605
p. 312.437.7240 w. www.sdg-design.com



Landscape Architect

ISSUANCES

Rev. #	Description	Date Issued
FINAL PUD		03/27/2019

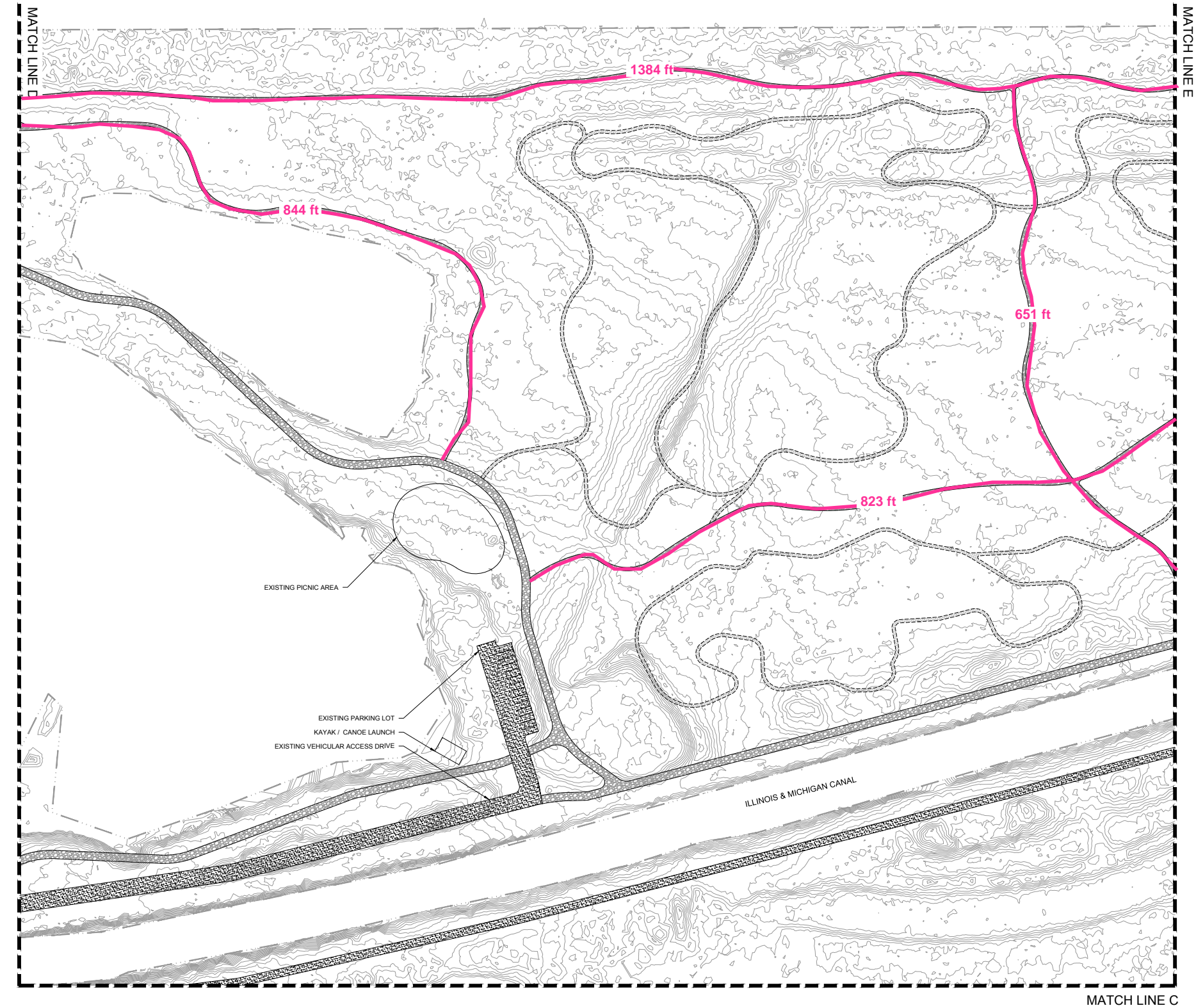
Project No: 8189
Drawn: CR File: 8189_site.dwg
Checked: RR Scale: AS NOTED
Approved: XX

Sheet Title:
SITE ENLARGEMENT PLAN

Drawing Number:

L-105

EXHIBIT E: SITE PLAN



1 SITE ENLARGEMENT PLAN
1" = 60'-0"

LEGEND

- LTAP PROPERTY LINE
- PARCEL LINE
- GRAVEL PAVEMENT
- MULTI-USE TRAIL, LIMESTONE SCREENINGS
- PEDESTRIAN PATH, MULCH TRAIL **3702 ft**
- SINGLE TRACK MOUNTAIN BIKE TRAIL, CLAY BASED BIKE TRAIL MIX
- CONCRETE PAVING
- QUARRY RELIC
- RESTROOM
- PEDESTRIAN BRIDGE
- SECURITY FENCING
- LIGHT FIXTURE
- EXISTING UTILITY POLE WITH PROPOSED LIGHT FIXTURE
- EXISTING UTILITY POLE W/TRANSFORMER

The Forge
Lemont Quarries

1001 Main Street
Lemont, IL 60439



site design group, llc
888 South Michigan Avenue #1000, Chicago, IL 60605
p. 312.437.7240 w. www.sdg-design.com



Landscape Architect

ISSUANCES

Rev. #	Description	Date Issued
FINAL PUD		03/27/2019

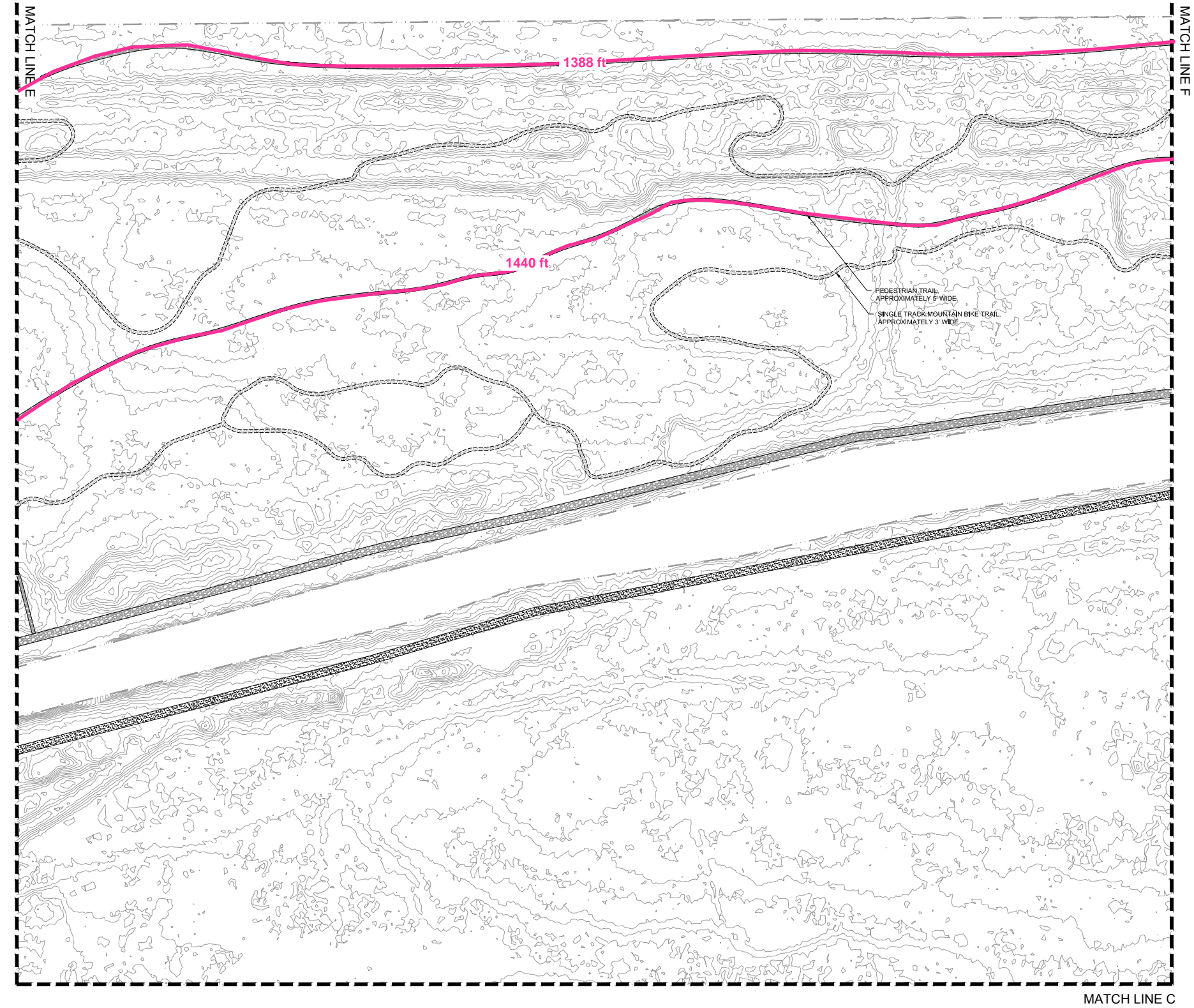
Project No: 8189
Drawn: CR File: 8189_site.dwg
Checked: RR Scale: AS NOTED
Approved: XX

Sheet Title:
SITE ENLARGEMENT PLAN

Drawing Number:

L-107

EXHIBIT E: SITE PLAN



1 SITE ENLARGEMENT PLAN
1" = 60'-0"

0 20 40 60 80 100 120'

LEGEND

- LTAP PROPERTY LINE
- PARCEL LINE
- GRAVEL PAVEMENT
- MULTI-USE TRAIL, LIMESTONE SCREENINGS
- PEDESTRIAN PATH, MULCH TRAIL, 2828 ft
- SINGLE TRACK MOUNTAIN BIKE TRAIL, CLAY BASED BIKE TRAIL MIX
- CONCRETE PAVING
- QUARRY RELIC
- RESTROOM
- PEDESTRIAN BRIDGE
- SECURITY FENCING
- LIGHT FIXTURE
- EXISTING UTILITY POLE WITH PROPOSED LIGHT FIXTURE
- EXISTING UTILITY POLE W/TRANSFORMER

The Forge
Lemont Quarries

1001 Main Street
Lemont, IL 60439



188 South Michigan Avenue #1100, Chicago, IL 60605
p. 312.427.7242 w. www.site-design.com



Landscape Architect

ISSUANCES

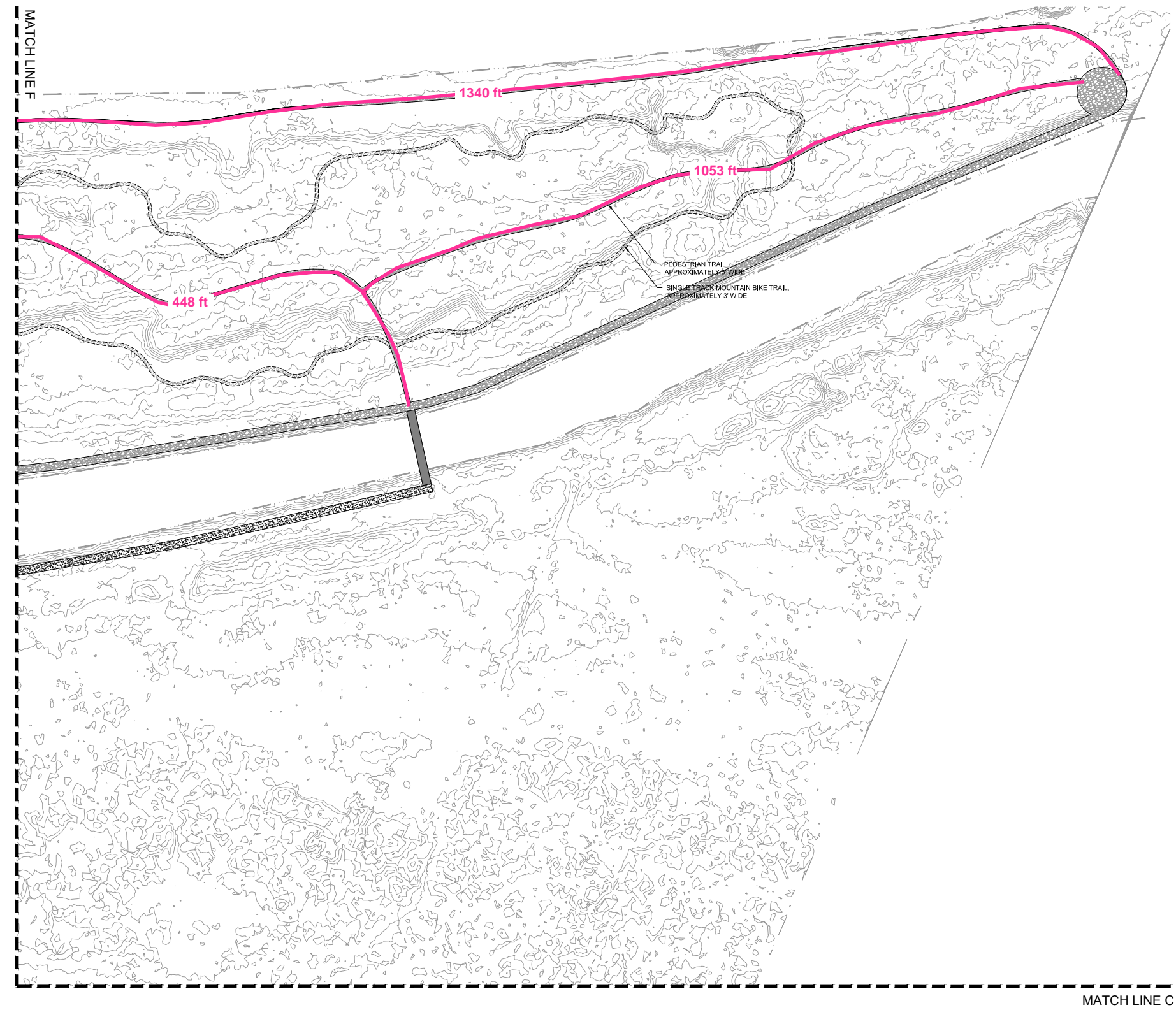
Rev. #	Description	Date Issued
	FINAL PUD	03/27/2019

Project No : 8189
Drawn : CR File : 8189_site.dwg
Checked : RR Scale : AS NOTED
Approved : XX
Sheet Title:
SITE ENLARGEMENT PLAN

Drawing Number:

L-108

EXHIBIT E: SITE PLAN



1 SITE ENLARGEMENT PLAN
1" = 60'-0"

The Forge
Lemont Quarries

1001 Main Street
Lemont, IL 60439



site design group, ltd.
188 South Michigan Avenue #1100, Chicago, IL 60605
p. 312.427.7242 w. www.site-design.com



Landscape Architect

LEGEND

- LTAP PROPERTY LINE
- PARCEL LINE
- GRAVEL PAVEMENT
- MULTI-USE TRAIL, LIMESTONE SCREENINGS
- PEDESTRIAN PATH, MULCH TRAIL, 2841 ft
- SINGLE TRACK MOUNTAIN BIKE TRAIL, CLAY BASED BIKE TRAIL MIX
- CONCRETE PAVING
- QUARRY RELIC
- RESTROOM
- PEDESTRIAN BRIDGE
- SECURITY FENCING
- LIGHT FIXTURE
- EXISTING UTILITY POLE WITH PROPOSED LIGHT FIXTURE
- EXISTING UTILITY POLE W/TRANSFORMER

ISSUANCES

Rev. #	Description	Date Issued
	FINAL PUD	03/27/2019

Project No : 8189	
Drawn : CR	File : 8189_site.dwg
Checked : RR	Scale : AS NOTED
Approved : XX	
Sheet Title:	
SITE ENLARGEMENT PLAN	

Drawing Number:

L-109